



Advanced technology that provides a fast and painless assessment of your liver health

Robert Wood Johnson Medical School's Division of Gastroenterology and Hepatology is one of a select group of health providers nationwide to offer individuals access to FibroScan®, an accurate, non-invasive, painless aid for diagnosing and managing liver disease.

The results obtained with FibroScan, along with other diagnostic tests, will help your physician monitor your liver health.

- Easy and fast – takes about 10 minutes
- Painless and non-invasive
- Consistent results
- Adaptable to all body types, from pediatrics through adult
- The examined area is 100x the size of a needle biopsy
- Covered by most insurance plans

RUTGERS HEALTH

Division of Gastroenterology and Hepatology

Clinical Academic Building
125 Paterson Street, Suite 5100B
New Brunswick, NJ 08901

Appointments: 732-235-7784, ext. 1

FibroScan services at the division are provided under the direction of:

Vinod K. Rustgi, MD, MBA
Clinical Director of
Gastroenterology
Director of Hepatology
Professor of Medicine

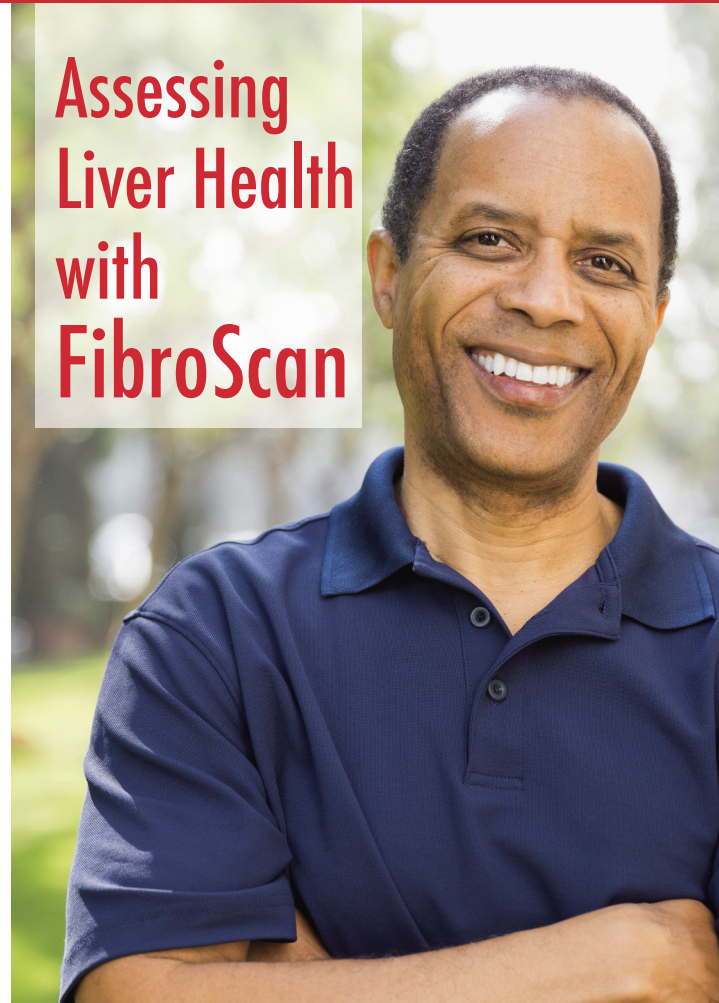


Robert Wood Johnson | **RWJ Barnabas**
University Hospital **HEALTH**

Non-FibroScan® images used are licensed courtesy of Getty Images.
All licensed material is being used for illustrative purposes only;
any person depicted in the licensed material is a model.

Rutgers, The State University of New Jersey

Assessing Liver Health with FibroScan



RUTGERS HEALTH

Robert Wood Johnson | **RWJ Barnabas**
University Hospital **HEALTH**



Fast and painless, FibroScan makes the monitoring of your disease more convenient.

What is FibroScan?

An examination with FibroScan, which uses a technology called Vibration Controlled Transient Elastography (VCTE™), is a non-invasive test used to assess liver stiffness.

FibroScan provides non-invasive measurement of shear wave speed and equivalent stiffness in the liver. The shear wave speed or stiffness may be used as an aid to clinical management of your liver disease.

The result shows the evolution of the health of your liver.

FibroScan measures liver stiffness



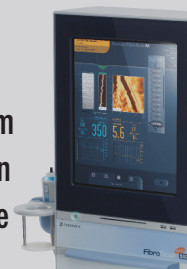
Soft liver = normal

Stiff liver = abnormal

What does the FibroScan examination consist of?

You lie on your back, with your right arm raised behind your head. Your technician or nurse applies a water-based gel to the skin and places the probe against your skin with a slight pressure.

The examination includes 10 consecutive measurements made at the same location.



Is it painful? No.

The FibroScan examination is painless, quick and easy. During measurement, you feel a slight vibration on the skin at the tip of the probe.

Can I eat prior to the test?

You should not eat within **two or three hours** of the FibroScan test.

What do I wear?

The FibroScan test is performed on your right side under your arm at the level of your breast bone. You should wear a blouse or shirt that can be partially unbuttoned to expose your right side above the waist and below the breast bone.

How long is the test?

The entire FibroScan test session will require 15-20 minutes and provides immediate results.

What do I do with the result?

Your physician interprets the result according to your history and your disease.



To schedule an appointment, call 732-235-7784, ext. 1