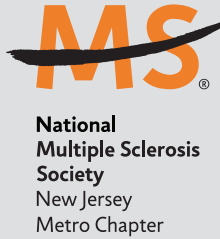
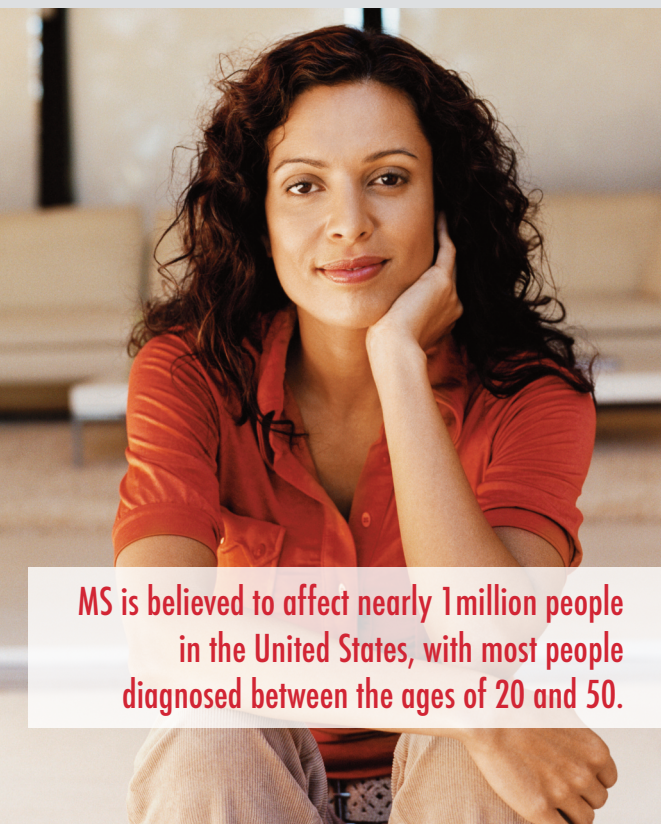


Established in collaboration with the National Multiple Sclerosis Society New Jersey Metro Chapter, the Center has been designated as a **Center for Comprehensive MS Care** by the National MS Society.



The National MS Society provides this designation to distinguish centers that have “shown the ability to offer a multi-disciplinary model of care to address the often complex needs of many people with MS.” As a recognized Center for Comprehensive MS Care, The Robert Wood Johnson Center for MS offers patients access to a full range of medical, psycho-social and rehabilitation services in a team-based, coordinated environment.



**MS is believed to affect nearly 1 million people in the United States, with most people diagnosed between the ages of 20 and 50.**

# RUTGERS HEALTH

**Robert Wood Johnson Center for MS**  
Clinical Academic Building (CAB)  
125 Paterson Street, Suite 6100  
New Brunswick, NJ 08901  
**Phone: 732-235-7733**  
**Fax: 732-235-6597**

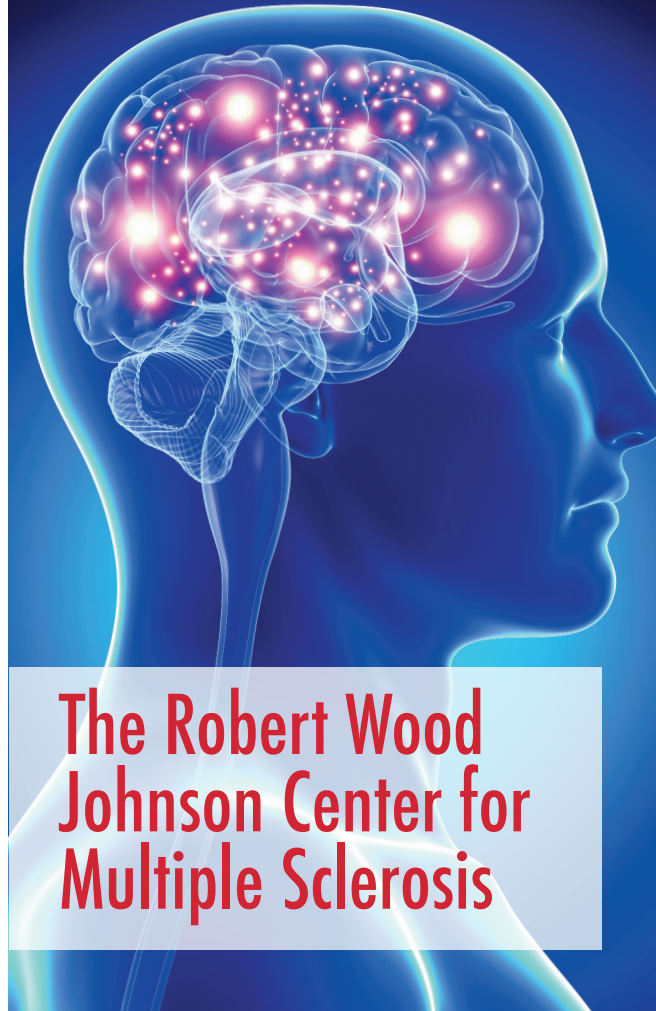
## Directions

**From the N.J. Turnpike:** Take Exit 9 (New Brunswick) and proceed to Route 18 North. Continue on Route 18 North about two miles to Route 27 South (Princeton Exit). Follow Route 27 past the New Brunswick train station. At this point, Route 27 becomes French Street. After passing the train trestle, then the skywalk, turn left at the light onto Paterson Street. Parking is available in the Paterson Street Parking Deck (hourly rates); the entrance will be on the right side of the street. Valet parking is available for an additional fee at the drop-off area to the CAB building.

**From Route 18 North:** Continue on Route 18 North to Route 27 South (Princeton exit). Follow the directions above from Route 27 exit.

Rutgers Health complies with applicable federal civil rights laws and does not discriminate on the basis of race, color, national origin, age, disability or sex. Rutgers Health does not exclude people or treat them differently because of race, color, national origin, age, disability or sex. ATENCIÓN: Si habla español, tiene a su disposición servicios gratuitos de asistencia lingüística. Llame al 1-732-235-7733.

Non-faculty/staff images used are licensed courtesy of Thinkstock. All licensed material is being used for illustrative purposes only; any person depicted in the licensed material is a model.



## The Robert Wood Johnson Center for Multiple Sclerosis

# RUTGERS HEALTH

**Robert Wood Johnson University Hospital** | **RWJ Barnabas Health**

*A Designated Center for Comprehensive MS Care  
by the National Multiple Sclerosis Society*



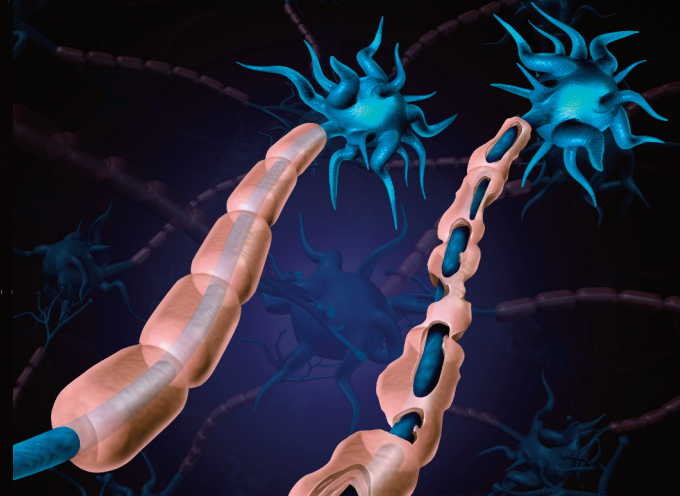
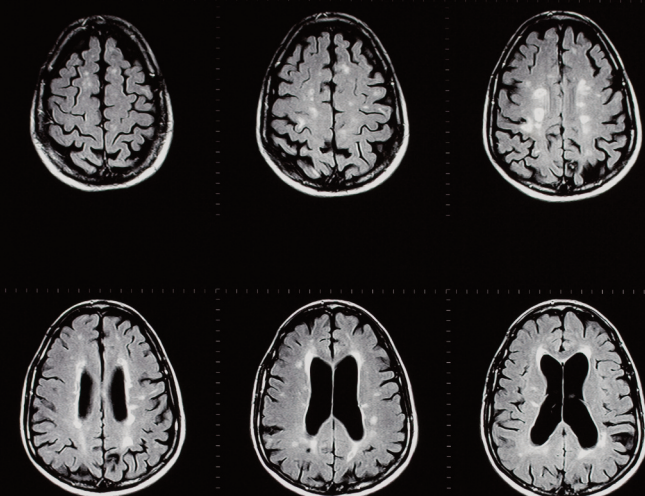
## Blending Clinical Care and the Latest Research in a Commitment to Excellence

**The Robert Wood Johnson Center for Multiple Sclerosis (MS)** was established in 2005 at Robert Wood Johnson Medical School in conjunction with Robert Wood Johnson University Hospital, under the direction of Suhayl Dhib-Jalbut, MD, professor and chair of the Department of Neurology, and an internationally recognized leader in the area of MS research.

The Robert Wood Johnson Center for MS is committed to providing the highest quality care to individuals with MS through:

- **Accurate diagnoses**
- **Comprehensive treatment plans**
- **Innovative research**
- **Education**

*Rutgers, The State University of New Jersey*



## Patient Care

### Diagnosis

Many neurological diseases can look like MS. Thus, care for MS begins with a timely and accurate diagnosis. Our center provides the tools needed to arrive at a correct diagnosis, including:

- Clinical evaluation by MS-trained neurologists
- Magnetic Resonance Imaging (MRI)
- Spinal Fluid Analysis
- Evoked Potentials
- Pediatric MS services

### Treatment and Comprehensive Care

The center provides therapies approved for the treatment of MS at different stages of the disease. We believe in a team approach to MS care. This includes the use of up-to-date disease-modifying therapies, and management of symptoms related to MS.

### Timely and appropriate referrals for:

- Rehabilitation services
- Neuro-ophthalmologic evaluation
- Urologist
- Neuro-cognitive evaluations
- MS-certified Advanced Practice Nurse

## Research

### Clinical Research

- Identification of predictors of treatment response
- Influence of diet on MS disease activity
- Triggers of MS
- Clinical trials

### Basic Research

- Causes of MS
- Mechanisms of action of MS therapies
- Immunology of pediatric MS
- Role of infectious triggers in MS
- Role of gut bacteria in MS

## Education

Our goal is also to promote education on MS and its related issues in collaboration with the National MS Society New Jersey Metro Chapter. Education is provided through seminars, regional and national educational symposia, and training of medical students, residents and fellows in MS care and research.



MS Sculpture of Hope at RWJUH:  
A World Free of MS

Installed in May 2007, the Sculpture of Hope is displayed in the hallway of Robert Wood Johnson University Hospital, near the bridge to the medical school's Clinical Academic Building. It was established as a joint project of the hospital, the National MS Society New Jersey Metro Chapter, and Women Against MS, which is designed to raise awareness of MS and raise funding for clinical and research programs. To support this project, send your donation (with "Sculpture of Hope" in the memo line) to the Department of Neurology - Robert Wood Johnson Center for MS, 125 Paterson Street, Clinical Academic Building, Suite 6100, New Brunswick, NJ 08901. Donor's name(s) will be engraved on the sculpture.

## Our Faculty and Staff



**Suhayl Dhib-Jalbut, MD**  
Center Director, Professor and  
Chair of Neurology



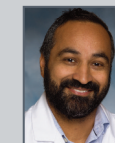
**Konstantin Balashov, MD, PhD**  
Professor of Neurology



**Vikram Bhise, MD**  
Associate Professor of Pediatrics &  
Neurology  
Director, Pediatric MS and  
Demyelinating Diseases Program



**Yaritza Rosario, APN, MSCN**  
Advanced Practice Nurse, MS Certified  
Nurse, Research Coordinator



**Jasdeep S. Hundal, PsyD, ABPP-Cn**  
Assistant Professor of Neurosurgery  
Director of Neuropsychology



**Kouichi Ito, PhD**  
Associate Professor of Neurology  
& Research Scientist

**Susan Gabriel**  
Clinical Administrative Assistant

**Lauren Kelly**  
Research Administrative Assistant

For more information on our faculty and staff,  
please visit our web site at:  
[rwjms.rutgers.edu/neurology](http://rwjms.rutgers.edu/neurology)

For appointments or additional questions, please call  
**732-235-7733**